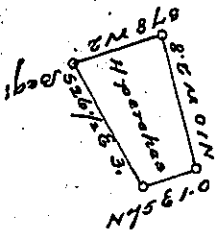


York County Shore




Lancaster County Shore

A Draught of an Island situated in the River Susquehanna in the Township of  
 Mandi, in the County of Lancaster. Called Rock Island, near the upper end  
 of Turkeyhill Falls opposite the lands of Christian Wissler on the Lancaster  
 Shore, and opposite the lands of John Bead on the York Shore, contain-  
 ing four perches. Strict Measure Surveyed in pursuance of a Warrant  
 dated the 4<sup>th</sup> day of January Anno Domini 1822, granted to Adam Berollet  
 & Jacob Okwerlet

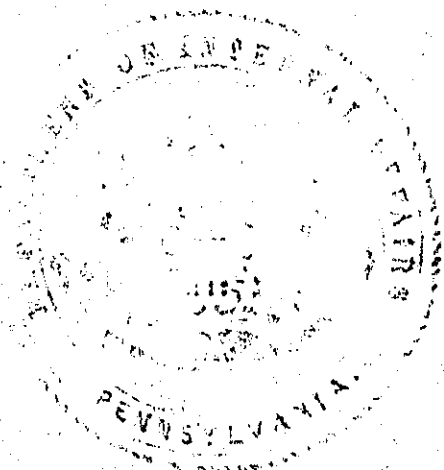
Examined & Certified the 3<sup>rd</sup> May 1830

Henry Carpenter  
 for Jacob Hilsman R.S.

To Gabriel Nicolet  
 Surveyor General



IN TESTIMONY that the above is a copy of the original remaining on file in  
 the Department of Internal Affairs of Pennsylvania, made  
 conformably to an Act of Assembly approved the 16th day of  
 February, 1833, I have hereunto set my Hand and caused  
 the Seal of said Department to be affixed at Harrisburg,  
 this fourth day of April, 1899



James Watts  
 Secretary of Internal Affairs